

“When what we introduce into the children's world of ideas and feelings is in line with the direction of the developmental forces of a given stage of life, we strengthen the entire developing person in a way that remains a source of strength throughout that person's life.”

–Rudolf Steiner



WHY THE ANNUAL FUND CAMPAIGN?

Our Annual Giving Campaign and other development efforts support nearly 10% of our school's budget each year. These funds fill the gap between what is charged in tuition and the actual cost of providing a Waldorf education to every student. Without generous donations to Annual Giving, we would need to charge at least \$1000 more per student in tuition. We rely on these tax-deductible gifts to bridge the gap and balance the school's budget each year. Annual gifts help to provide the highest quality education possible while keeping tuition affordable so that more students can benefit from Waldorf education.

OUR ANNUAL FUND GOALS

To raise \$150,000

- To reach 100% participation from the school's families and leadership groups

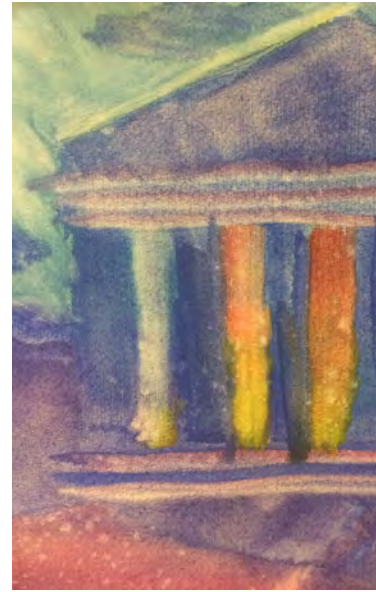
- To increase the number of “sustaining families” (recurring, monthly gifts)

We depend on participation from parents, faculty and staff, Board members, alumni, alumni parents and grandparents and friends of the school to reach our goals. The amount of each gift isn't nearly as important as participation- at any level. Some give \$5, others give \$25,000. We ask you to give a gift that is significant and meaningful to you and your family. Your participation demonstrates our community's commitment to our school's mission and encourages others to support us as well. With your help, we will meet our goals, one family and one gift at a time.

WHAT IS A “SUSTAINING FAMILY”?

A sustaining family provides a regular monthly gift to the school, which helps build a predictable source of funding. Sustained, monthly giving is a way to provide valuable support to our school in a way that is manageable for your budget and busy lifestyle. Once your family's gift is set up, it will automatically repeat each month, providing a convenient way to spread your contribution over time and make manageable payments in an amount that's right for you. It also helps the school cut down on paper mailings and administrative costs.

Thank you for considering becoming a sustaining family! Please use the enclosed reply envelope to start your sustaining gift, or give online at www.clws.org.



WHEN YOU CONTRIBUTE TO THE ANNUAL FUND THIS YEAR, YOUR CONTRIBUTION WILL SUPPORT THESE OPERATING EXPENSES:

Support classroom and subject teachers for one grades classroom	\$100,000
Bring a world language program to grades 1 – 8	\$45,000
Offer the ensemble program to grades 3 – 8	\$30,000
Offer the average Tuition Assistance Award to one family/child for one year	\$6,000
Support School Festivals throughout the year	\$5,450
Purchase woodworking/art program supplies for all grades	\$3,900
Grow and maintain the library program	\$3,500
Rent the Women's Club for our Annual Circus	\$1,800
Support the “ gap ” between tuition and the true cost to educate each child	\$1,500
Subsidize one month of tutoring for students receiving tuition aid	\$1,000

OUR 2016-17 ACCOMPLISHMENTS

Graduated our 24th eighth grade class, bringing our total alumni to 398

Expanded Kindergarten Classroom space to accommodate up to 20 students

Opened our Loring Park Early Childhood Campus and moved the Birch Kindergarten

Achieved record enrollment of 277 students

Enhanced Safety and Security with a full time Safety Officer, new classroom door locks and an improved building access system

Improved building access for all by upgrading the handicap entrance

Completed the final phase of a school wide Assessment of Inclusivity and Multiculturalism

Initiated the Three Streams Approach: a new student support program integrating the work of the educational support, social health, and discipline and guidance committees



All of the typical descriptors of Waldorf education—*Educating the Head, Heart and Hands; Thinking, Feeling and Willing; Inspired Learning; Education from the Inside Out*—point to both the method and the outcome of this unique pedagogy that by specific design develops the whole human being.

In Waldorf education, we understand the task of the teacher to be that of awakening the fullness of human capacities within each child. This is not simply a matter of exposure to various subjects for the purpose of creating a well-rounded person. Lifelong capacities are nurtured through the enlivened content and timeliness of the lessons – from playing in the mud to re-enacting the Ramayana, from reciting Chaucer and drawing the Fibonacci Spiral to writing an essay on the courageous life of Sojourner Truth – the experience of the Waldorf curriculum forges deep roots and lives in the students for a lifetime.

Waldorf education provides the growing child with a unique confidence in their multiple capacities and the inner freedom to listen to their heart and follow their own path.

City of Lakes Waldorf School is planning for the future. In 2018, we will open a Toddler program at our Loring Park Campus. This program will provide high quality Waldorf childcare in the Twin Cities in a prime location just a mile from our Whittier home. We are also working on a comprehensive redesign of our outdoor play space to enhance both beauty and function and to better accommodate the needs of students of all ages. In addition, we are engaged in a process to finalize a design for the remodel of our garden level for new early childhood classrooms. Lastly, we are exploring the possibility of purchasing and renovating the church across the street (2315 Nicollet Ave S) in order to secure a festival hall and potential theater and commercial kitchen and lunchroom space. In the New Year, we will share designs for these projects with our community as a part of a feasibility study.

The longer I am in the field of Waldorf education, and the more students and alumni that I have the privilege to meet in schools across the continent – the more I am convinced of the profoundly positive impact that Waldorf education has on the developing child. Waldorf graduates embody a sense of wholeness and integrity bringing all of who they are to their endeavors; they enliven the conversation, think original thoughts, include others, make things beautiful, care about the world, and seek and boldly create meaningful lives and relationships.

We have big dreams for our students and for the world's future. We hope that you will help us continue the strong tradition of giving at City of Lakes Waldorf School and contribute to the 2017-18 Annual Giving Campaign – to support our thriving school.

Marti Stewart
Administrative Director

"Things that matter most must never be at the mercy of things that matter least."

—Goethe



Whole
Constituting the
entirety of a person's
nature or development



2344 Nicollet Ave South
Minneapolis, MN 55404
612.767.1550
www.clws.org



WHOLE



CITY OF LAKES WALDORF SCHOOL
2017-2018 ANNUAL FUND CAMPAIGN